

www.maintenancesystems.com.au

34 Derwent Park Road, Derwent Park 7009

Phone: (03) 6273 4955 Facsimile: (03) 6273 4977

Email: admin@maintenancesystems.com.au

**CONTRACTING \* \* \* \* INNOVATION \* \* \* \* SPECIFICATION**

## **SPECIALISED ANCHORING, GROUTING AND INDUSTRIAL COATING SERVICES**

### **SPECIALISED ANCHORING**



*Museum of Old and New Art – Feature wall incorporating rock bolting.*



*Red Bridge Campbell Town – Archtec anchoring to upgrade load capacity of this major highway historic bridge – Completely hidden – this bridge has 36 x 5mtr stainless steel anchors placed tangentially to the 3 arches.*



*St Patrick's Church at Colebrook – Restoration for Pugin Foundation. Cintec – fully hidden stainless steel anchors support and tie the spire structure and main roof.*



*Hobart Reservoir – Cintec anchors to full height to stabilise wall for 1000 year flood security – This is a heritage site and all anchoring is completely hidden.*

# SPECIALISED GROUTING



**NYRSTAR** – 200 metre holes drilled into embankment required the final 20mtrs to have stainless steel pipe and flange termination grouted in place – Special purpose grouting technology was developed to undertake the works – Picture shows grout being placed with overflow bleed in action.



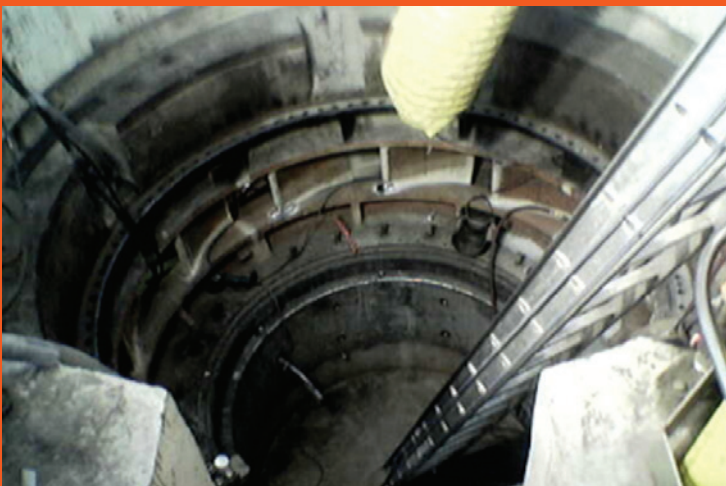
**NYRSTAR** – The completed system – 9 outlets – Acids can now be drained out as required and be removed safely.



**NORSKE SKOG** – 11 cubic meters of deep pour epoxy grout placement to log feed and debarking mill base plates – This specialised grout for high dynamic loads placed using continuous mixing and pumping technology.



**BELL BAY GAS FIRED POWER STATION** – The Rolls Royce, turbine and generator set is the main power plant and sits on a tapered grout bed 80 to 30mm over 30mtrs – 6m<sup>3</sup> epoxy deep pour grout placed within 1 day – Continuous pour mixing and pumping technology.



**TREVALLYN POWER STATION** – Vertical inlet tunnel – Precision cementitious grout to lock steel to surrounding concrete.



**Demolition grout** – great for breaking out dolerite rock – silently – in built up areas – where blasting is not acceptable.

# SPECIALISED COATING



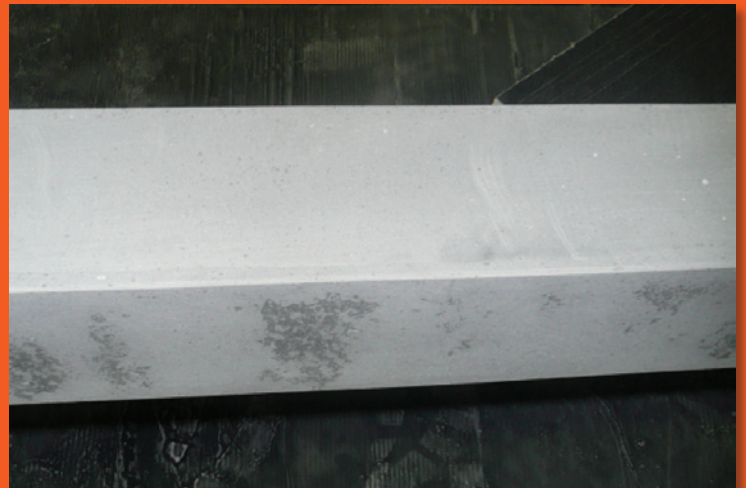
*MONA – Shotcrete – preparation and application.*



*MONA – feature wall – The shotcrete application completed.*



*6hr fire rated encasement of SHS steel – preparation stage.*



*6hr fire rated encasement of steel – finished section.*



*Vermiculite firespray to steel beams providing 120 minute rating to structural steel members.*



*Looking for fire protection?  
We offer a comprehensive range of solutions.*

# TECHNICAL INDUSTRIAL PAINTING

*Total package works comprising concrete plinths repair, blasting and coating of all tank, pipes and walkways under strict QA and Hazard control.*



## ORIGIN ENERGY – SELFS POINT

*Before concrete and steel remediation*



*Extensive Concrete Repair*



*After concrete and steel remediation*

- *Founded 1990 as a specialist Contracting and Consulting company*
- *Focus is the enhancement, protection, maintenance and repair of concrete assets*
- *Provides survey and advice as to correct solutions to client problems*
- *Applies the recommended and agreed solutions in accordance with the relevant standards and product manufacturers specifications*

**WE OFFER EXPERIENCE, INNOVATION, QUALITY, SERVICE**

**Contact: Stuart Spotswood 0409 495 685 Richard Eveleigh 0419 323 083 Alan Debnam 0418 532 866**